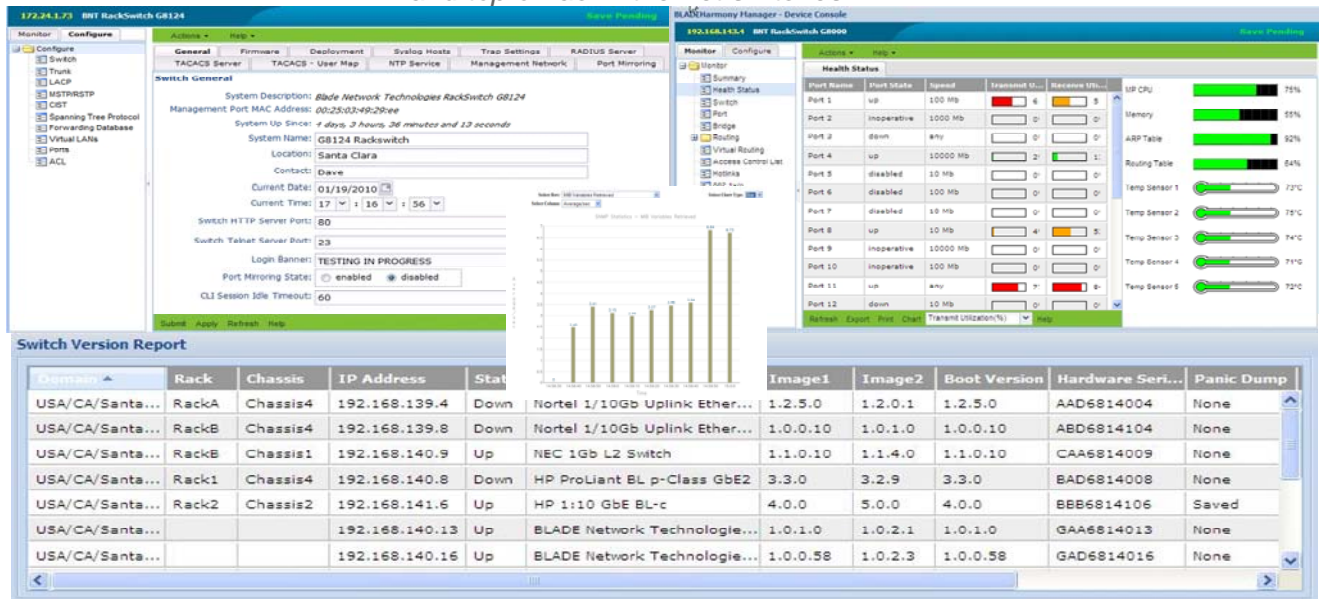


Point and click administration to simplify and centralize the management of your blade server and top of rack Ethernet switches.



BLADEHarmony™ Manager is an application for remote monitoring and management of switch modules from BLADE Network Technologies. It provides a centralized point of administration to improve service delivery while reducing management costs

Benefits

- **Simplified Management:** BLADEHarmony Manager simplifies deployment and configuration management by enabling the administration of large groups of switches from central location in a single operation. Updates that used to take hours or days can be done in minutes
- **Easy to use:** Switches on the network can be discovered automatically and can be managed from a client located anywhere.
- **Automation:** Automated and scheduled software downloads, configuration updates/backups and switch reboots simplify the management of switches and reduce human errors.
- **Integration:** Integrated with industry-leading Enterprise Management Systems, including HP SIM, IBM Director, and existing authentication servers, improving security and lowering training and other costs.
- **Monitoring and Reporting:** With BLADEHarmony Manager you can monitor the health status and performance of the network. BLADEHarmony Manager also offers comprehensive asset, event, and virtualization reporting on all BLADE switches in your network.

New Features in BHM 4.0

- Detailed, web-based switch configuration console
- VM Data Center Report identifies VM location in the network
- Windows Server 2008 support
- Full support of RackSwitch devices
- Support for BNT 1:10Gb Intelligent Network Switch
- VMready management improvements
- Dial Home improvements

Free Trial & Video

Free trial copies of BLADEHarmony Manager and a demo are available at:

www.bladenetwork.net/bhm

BLADEHarmony Manager at a Glance

Group Configuration Management

- Upgrade multiple switches simultaneously from a central location, or via a defined schedule
- Update & backup configurations to or from multiple switches simultaneously
- Configure & control (reboot, etc) multiple switches simultaneously
- Discover image versions, serial numbers, and other attributes of installed switches

Device Management

- Detailed web-based switch Configuration Console
- Perform management actions such as CLI execution, apply and save of configuration, reset switch, display diff on configuration or flash image, and generate a configuration dump.
- Launch Telnet session to the switch CLI to perform detailed configuration tasks
- Launch a web session to the BBI of the switch to perform detailed configuration tasks.
- “*Manager-of-Managers*” expands number of devices supported into the 1000s
- Command Line Interfacing to BHM functionality

Authentication and Authorization

- Local, TACACS+, RADIUS authentication
- Authorization with three levels of hierarchy for administrative roles

SNMP based configuration and management

- SNMPv1, SNMPv2c and SNMPv3 support
- Standard Notification (trap and syslog) support

Fault Management

- “*Health Status*” snapshot of device health
- Dial Home sends notifications based on events detected in the network.
- Centrally receive and display syslog messages and SNMP traps from switches
- Poll the health status of switches
- Report panic state and reason for last reboot

Pricing and Ordering

Send an email to services@bladenetwork.net or visit www.bladenetwork.net/bhm.

©2010 BLADE Network Technologies, Inc. All rights reserved. BLADEHarmony Manager is a trademark of Blade Network Technologies in the U.S. and other countries. Information in this document is subject to change without notice. BLADE Network Technologies assumes no responsibility for any errors that may appear in this document. All statements regarding BLADE's future direction and intent are subject to change or withdrawal without notice, at BLADE's sole discretion. <http://www.bladenetwork.net>

Performance Management

- Collect, display, and graph real-time performance statistics
- Collect and report switch attributes and statistics

Automatic Discovery

- Discover switches automatically by specifying IP ranges/subnets or by importing discovery addresses via file.
- Organize switches in user-defined groupings for ease of management

Device Support

- For BNT 1Gb L2/3, L2/7 switches, 10Gb L2/3 switches, and Virtual Fabric 10G Switch Module for IBM BladeCenter
- For HP 1Gb L2/3 up to the 10Gb L2/3 switches
- For NEC 1Gb L2/3 up to the 10Gb L2/3 switches
- For BLADE RackSwitch switches

SmartConnect™ and VMready™ Support

- Additional management functionality for SmartConnect™- and VMready™-based switches

Licensing Tiers

- Trial version – up to 6 switches
- Up to 50, 100, 250, 500, 1000, or an unlimited number of switches

Management Server Operating Systems

- Microsoft® Windows® 2003/2008 or XP; SUSE Linux Enterprise Server 10; SUSE Linux Enterprise Server 9 with Service Pack 3 for x86; Red Hat Enterprise Linux 5 for x86; Red Hat Enterprise Linux 4 AS and ES for x86 with Update 5 ; AIX 5.3

Integration

- With HP Systems Insight Manager 5.1+
- With IBM Systems Director 5.20+ & 6.1+
- VMware Virtual Center