

StoragePro Software

StoragePro Software

StoragePro software is integrated inside the V-Switch and provides comprehensive storage management and virtualization services. StoragePro ensures simple and efficient use of storage resources for hundreds of connected servers. Its open system architecture provides complete storage flexibility, enabling IT managers to manage a single virtual pool of storage from any vendor. Because there are no incremental costs for adding servers, volumes, or storage capacity, companies gain significant cost savings over other offerings in the market.



SAN CONNECTIVITY AND MANAGEMENT FOR ANY SERVER

SANRAD's unique network architecture delivers open, heterogeneous support for any storage, providing IT managers complete flexibility to leverage existing storage investments and add new storage to meet the specific cost, performance, and reliability needs of the enterprise.

SANRAD V-Switches couple FC and iSCSI connectivity with integrated storage management, virtualization, and disaster recovery services. Customers can use inexpensive iSCSI to connect and manage any storage wherever it resides, physically or virtually, regardless of geographic location. Critical tasks such as backup, data migration and replication are performed non-disruptively with no downtime to the business.

STORAGEPRO SOFTWARE KEY FEATURES AND BENEFITS

▼ Open, Heterogeneous System Architecture

Use any brand or type storage system directly connected or connected through a FC SAN fabric to the V-Switch to create and manage a single virtual storage pool. Leverage existing storage and combine any new storage from other vendors.

▼ Server Scalability

Using iSCSI over standard Ethernet networks, provide hundreds of servers with storage resources across the organization without the need for extra software or licenses.

▼ Non-Disruptive Data Protection

Use volume-based snapshots for non-disruptive online backup and data testing. Microsoft VSS is supported to coordinate V-Switch snapshots with Microsoft Exchange, SQL and other applications.

▼ Easy, Live Data Migration

Move or copy data between different storage systems in real time with no disruption to IT operations. Easily migrate data from any storage array to any other storage array, including different vendor models.

▼ High Availability with Continuous Access

Cluster V-Switches into active/active configurations to ensure continuous operation during network outage. Do mirroring to replicate data simultaneously and synchronously to 2, 3 or 4 separate storage systems. In the event of connection, network, SAN fabric, RAID controller or storage system failure, multipathing enables failover to another path or storage system.

▼ Scalable Virtual Storage Pools

Dynamically create large storage pools by consolidating many storage systems into a centrally managed pool that can easily scale to several peta-bytes.

▼ Flexible Volume Creation

Create new custom volumes from an individual storage system or across multiple storage systems. Volume creation is done on the V-Switch, independent of the storage system. Volumes can be expanded while remaining online and range in size from 1MB to 64TBs. The V-Switch can create and manage up to 52,000 individual volumes.

▼ Virtual Storage Optimized for Server Virtualization

Get completely autonomous recovery of virtual servers with no need for IT intervention. Gain uninterrupted virtual machine access to data even during complete system outages, regardless of the physical location of the virtual server.

▼ High Performance

StoragePro software's real-time operating system ensures peak performance and extremely low latency to deliver line-speed data services to a large number of application servers.

▼ Storage Security

Gain server access control enforced by the StoragePro virtualization layer. Virtual volumes are selectively assigned to a pre-defined server or set of servers using SANRAD's Access Control List (ACL) with CHAP authentication.



StoragePro Software

STORAGEPRO SOFTWARE SPECIFICATIONS

SUPPORTS SYNCHRONOUS AND ASYNCHRONOUS REPLICATION

Storage Virtualization and Volume Management

Maximum no of servers supported: 200
Maximum no. of volumes supported: 51,200
Maximum capacity: 8192 TB (8.192 PB)

Span/Concatenate a Volume

Across devices or independent arrays
Up to 4 devices, Up to 64TB.

Partitioning a LUN into Volumes

Up to 51,200 Volumes Minimum 1MB – Maximum 64TB

Mirroring Synchronous

Protocol Independent (FC, SCSI, iSCSI)
Up to 4 way mirroring

Data Migration

LUN to LUN / Device to Device / Device to LUN
Protocol Independent (FC, SCSI, iSCSI)
Max Speed is 2TB per hour (2TB Read and 2TB write with 3800)

Stripe

User defined stripe size
Protocol Independent (FC, SCSI, iSCSI)
Across devices or independent arrays

Resizing Volumes

Add a volume to a production volume in real time.
Maximum size of final volume not to exceed 64TB

Snapshot

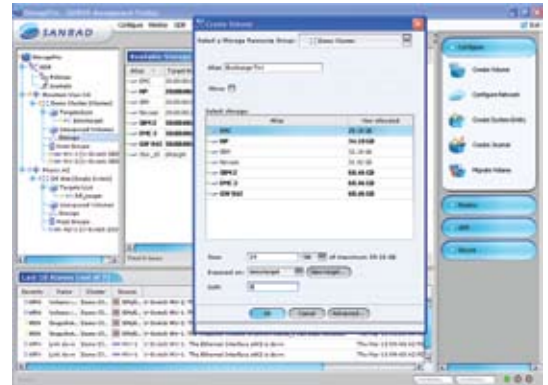
Copy-on-write, Pointer-based
32 per volume
Scripted or use Microsoft VSS
20% capacity reserve – adjustable

Number of V-Switches managed per StoragePro Management station

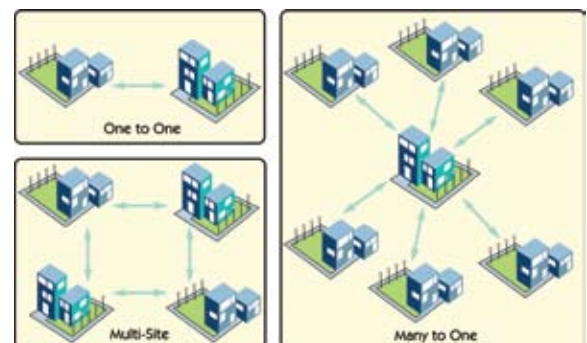
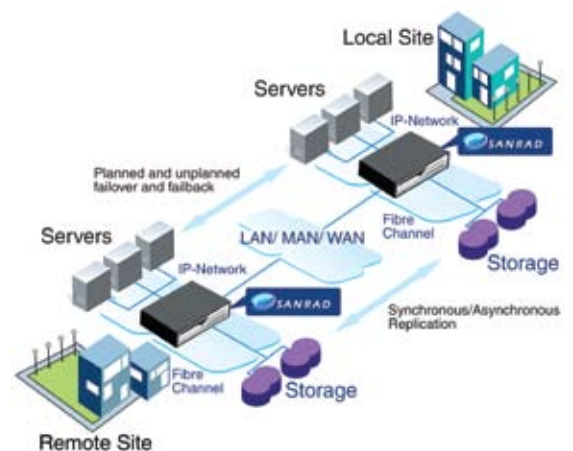
Up to 256 V-Switches
16 V-Switches recommended

Operating Systems

Windows or Linux



StoragePro Management GUI



Typical Installations